




**100 Springdale Road East Killara NSW**

5  5  2 

Fabulous Full Brick Family Home in Killara's Premier Street Standing elegantly as an exquisite example of flawless interior and exterior design, this stunning, as new, double brick home is set in the renowned Springdale Road, arguably Killara's most exclusive, east-side address. Providing a unique lifestyle opportunity like no other, the home offers a superb family friendly layout catering to easy living and generous entertaining. Flooded with natural light from its north-to-rear aspect & manicured level gardens with a selection of private & inviting alfresco entertaining areas makes it an idyllic setting for bringing up a family. Peacefully positioned on an enviable level block with a wide frontage & charming street appeal, it's sure to impress the most discerning of buyers & enjoys an ultra convenient location moments to transport, schools, shops & parks.

**Land Size** : 847 sqm  
**View** : <https://www.savillsresidential.com.au/sale/nsw/north-shore-upper/east-killara/residential/house/5961506>

The ultimate family package - long or short settlement



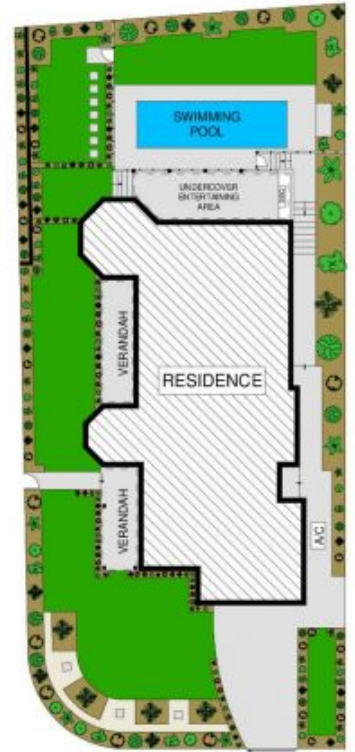
LOWER GROUND LEVEL



GROUND LEVEL



LEVEL ONE



SITE PLAN



100 SPRINGDALE ROAD, EAST KILLARA

APPROX. INTERNAL FLOOR AREA: 471 SQM  
 APPROX. TOTAL FLOOR AREA: 538 SQM



Scale in metres. Indicative only. Dimensions are approximate. All information contained herein is gathered from sources we believe to be reliable. However we cannot guarantee its accuracy and interested persons should rely on their own enquiries. [www.visionphoto.com.au](http://www.visionphoto.com.au)