



## 10 Lindsay Close Pymble NSW

5  3  4 

### Spacious Family Haven In Prestigious Enclave

Beyond its beautifully manicured front gardens and charming street appeal, this family home has been extended into a substantial modern entertainer, showcasing an expansive floor plan of multiple living areas flooded with natural light. Boasting seamless flow to a choice of inviting alfresco settings and pool drenched in northern sunshine, there is plenty of space for all ages to spread out and enjoy. Set on 1000sqm in a tightly-held cul-de-sac in Pymble's exclusive east-side, it boasts a tranquil yet convenient location a stroll to local shops, park, buses, rail and Pymble Public school.

**Land Size** : 1000 sqm

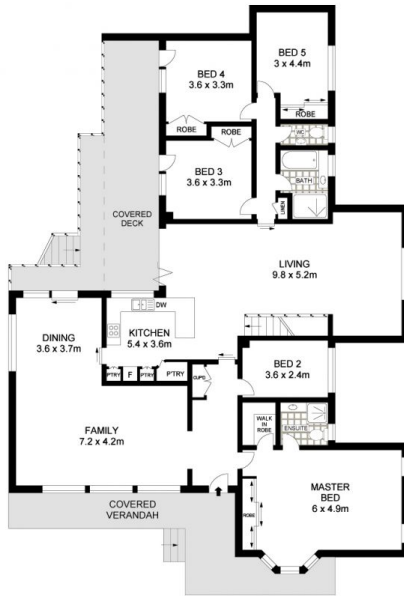
**View** : <https://www.savillsresidential.com.au/sale/nsw/north-shore-upper/pymble/residential/ho use/5961547>

? Spacious light-filled formal living & dining room opens to outdoor setting

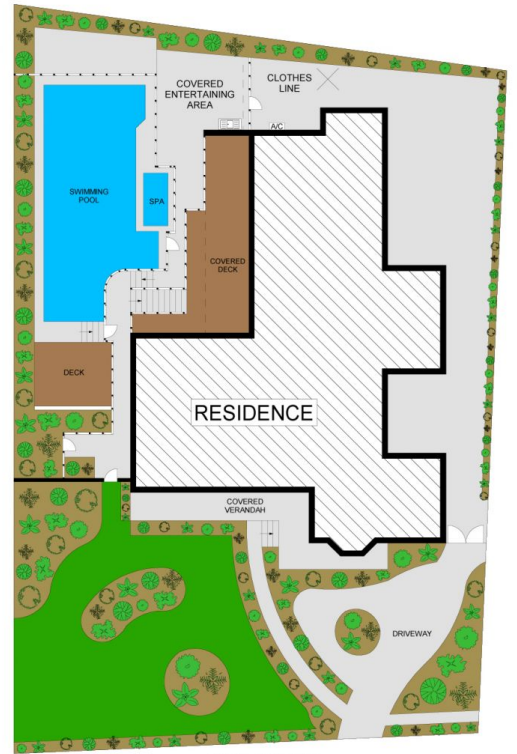
? Expansive family room flows through bi-folds to sunny north-facing deck



LOWER GROUND FLOOR



GROUND FLOOR



SITE PLAN



**10 LINDSAY CLOSE, PYMBLE**

APPROX. INTERNAL FLOOR AREA: 326 SQM

APPROX. TOTAL FLOOR AREA: 403 SQM

