



## 20 Bancroft Avenue Roseville NSW

4  3  2 

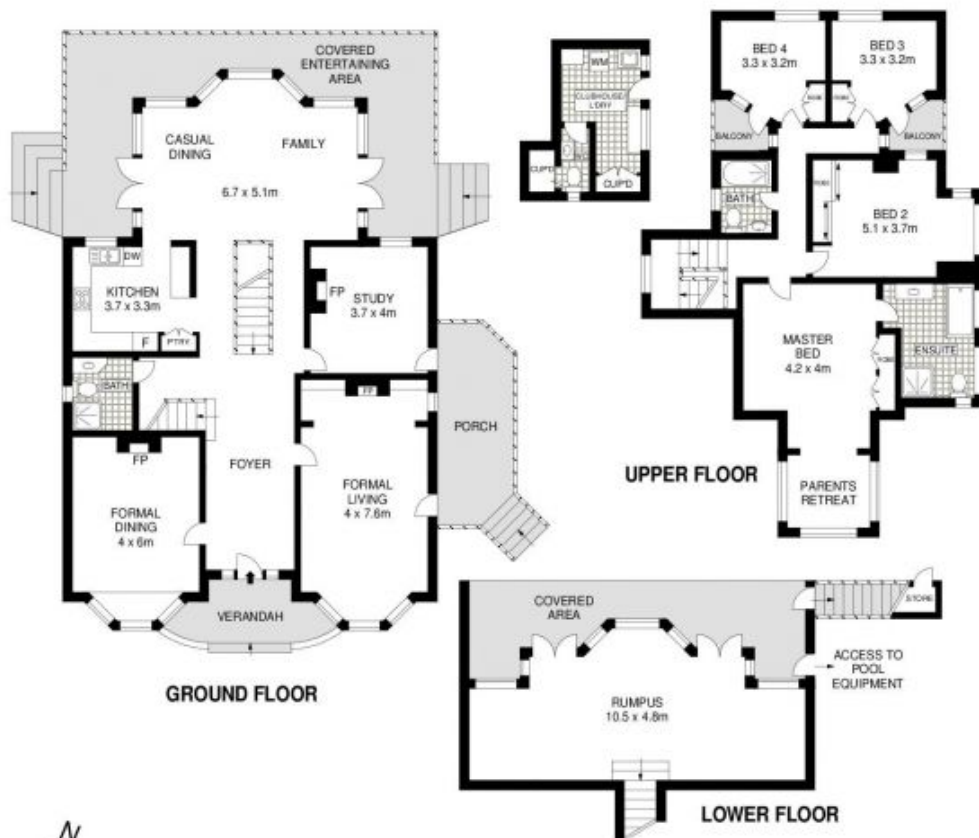
Large Family Home with Tennis Court, Heated Pool & Spa

'Brantwood' c1907

Classic formal spaces complemented by open plan casual living. One of Roseville's finest character residences, the gracious 'Brantwood' c1907 is the perfect showcase of Federation elegance, seamlessly blending exquisite period features with sophisticated modern-day luxuries. Impeccably extended to cater for an exceptional family lifestyle, its substantial floor plan features refined formal and relaxed casual living areas and multiple alfresco entertaining spaces complemented by a championship-sized tennis court, pool and spa. Positioned north-to-rear on an impressive 1384sqm (approx.) land parcel in a blue-ribbon east-side address, it enjoys an unbeatable location, footsteps to the heart of Roseville Village and rail.

**Land Size** : 1384 sqm

**View** : <https://www.savillsresidential.com.au/sale/nsw/north-shore-upper/roseville/residential/house/5961549>



**20 BANCROFT AVENUE, ROSEVILLE**

APPROX. INTERNAL FLOOR AREA: 293 SQM

APPROX. TOTAL FLOOR AREA: 395 SQM

**savills**

Scale in metres. Indicative only. Dimensions are approximate. All information contained herein is gathered from sources we believe to be reliable. However we cannot guarantee its accuracy and interested persons should rely on their own enquiries. [www.visionphoto.com.au](http://www.visionphoto.com.au)