



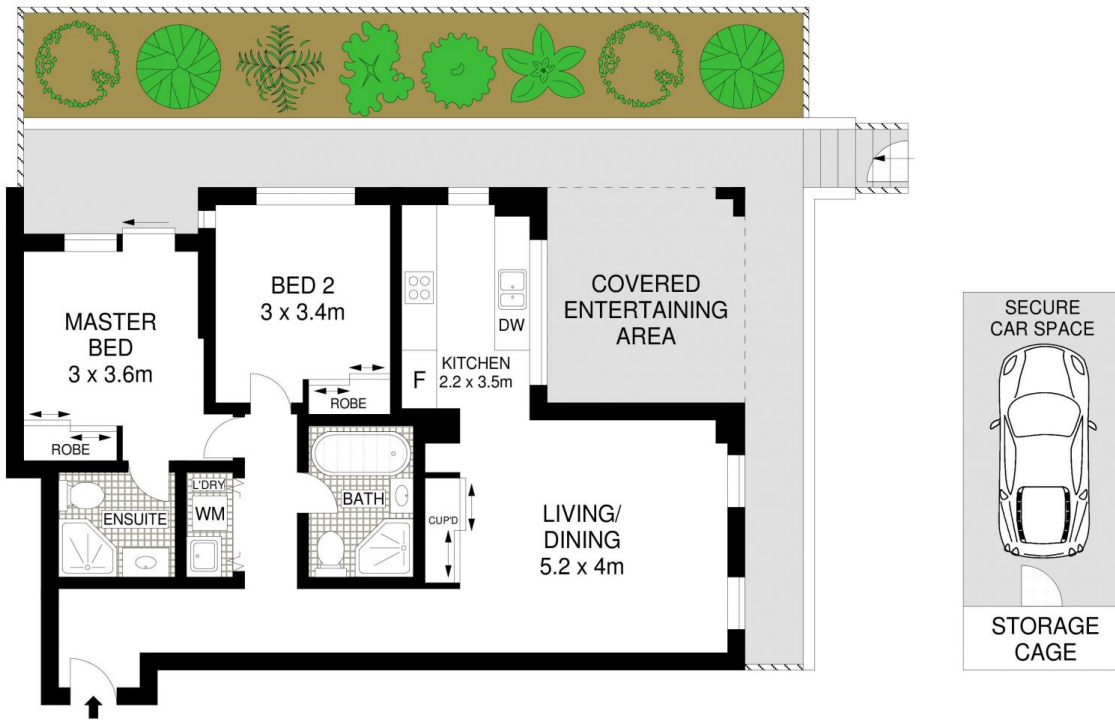
2/5-15 Boundary Street Roseville NSW

2  2  1 

Embrace an effortless urban lifestyle in this light and bright ground floor apartment, set in an impressive contemporary development, footsteps to Roseville village, rail and just a stroll into Chatswood. Designed with easy living in mind, it features modern interiors filled with top quality inclusions, two bedrooms and a northerly-facing al fresco setting perfect for year-round entertaining.

View : <https://www.savillsresidential.com.au/sale/nsw/north-shore-upper/roseville/residential/apartment/5961648>

- ? Sun-filled living & dining room with floor-to-ceiling glass sliders flowing outside
- ? Wraparound leafy garden courtyard features large covered entertaining terrace
- ? Gated access from courtyard to development's landscaped communal grounds
- ? Open-plan gas kitchen appointed with stone benchtops & European s/s appliances
- ? Two bedrooms with mirrored BIRs, Master with fully-tiled



APPROX. INTERNAL & EXTERNAL FLOOR AREA: 132 SQM
 APPROX. TOTAL FLOOR AREA: 147 SQM



Scale in metres. Indicative only. Dimensions are approximate. All information contained herein is gathered from sources we believe to be reliable. However we cannot guarantee its accuracy and interested persons should rely on their own enquiries. www.visionphoto.com.au