



4/705 Pacific Highway Gordon NSW

3  1  1 

Spacious, North Facing, Ground Floor Apartment with Leafy Outlook

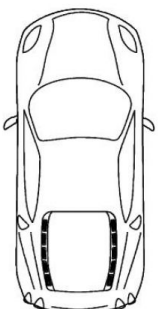
Very desirably located, only 300m from Gordon Station, this ground floor, full brick, apartment enjoys a sunny north facing aspect overlooking the private gardens of Tulkiyan heritage house. Well maintained and with 134sqm of accommodation, this exciting opportunity includes 3 very spacious bedrooms, a large living area, large eat-in gas kitchen and 1 ½ bathrooms. It is ideal for families, downsizers and investors.

- ? Very desirable and convenient location
- ? Elevated ground floor position
- ? Set back from the highway
- ? Full-brick construction
- ? Private, leafy, north aspect

Land Size : 134 sqm
View : <https://www.savillsresidential.com.au/sale/nsw/north-shore-upper/gordon/residential/apartment/5961672>

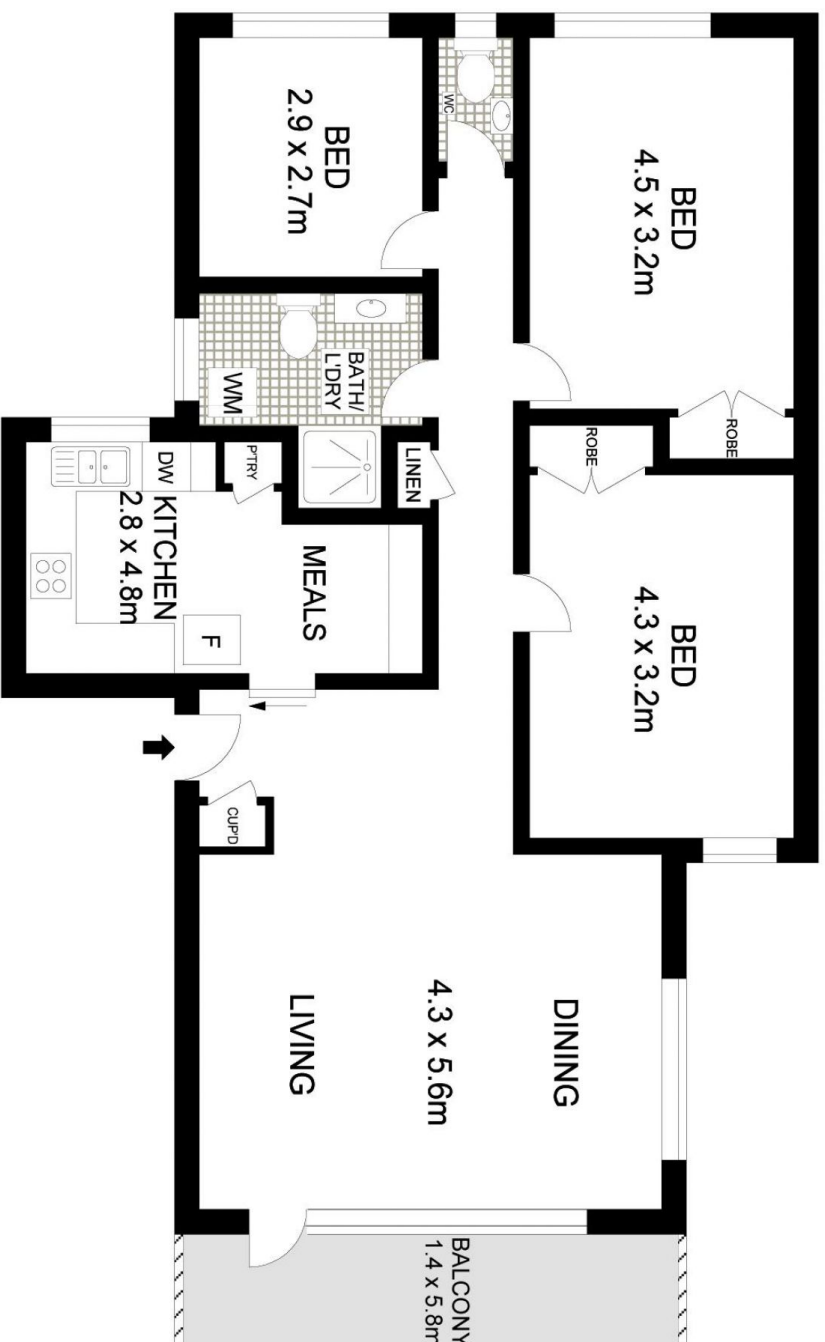


Scott Norrington
 0433 088 981



GARAGE
5.5 x 3.1m

STORAGE
CAGE
1 x 1m



4/705 PACIFIC HIGHWAY, GORDON

savills