



27/9-15 Cherry Street Warrawee NSW

2  2  1 

Brand New Townhouse in Desirable Location

Located only 500m to Turramurra Village and rail, with easy access to some of Sydney's best schools, this brand-new townhouse blends the appeal of the luxurious comforts of a house with the low maintenance convenience of an apartment. This seamless light-filled two-level townhouse with multi sliding doors flowing to private garden courtyards is designed for a relaxing, entertaining and care-free family lifestyle.

Designed by award winning 'Connor & Solomon' Architects, the premium natural finishes and exceptional detailing offer timeless elegance and a practical sense of comfort.

Features include -

View : <https://www.savillsresidential.com.au/sale/nsw/north-shore-upper/warrawee/residential/townhouse/5961805>



Lucy Liu
0450 413 488



FIRST FLOOR



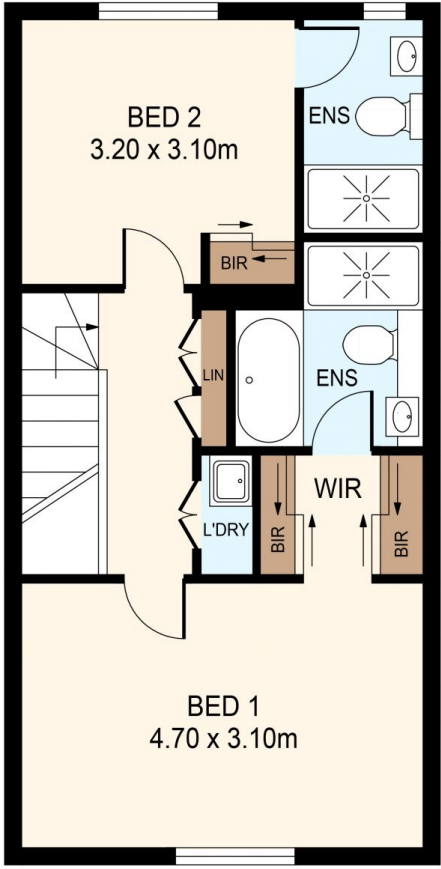
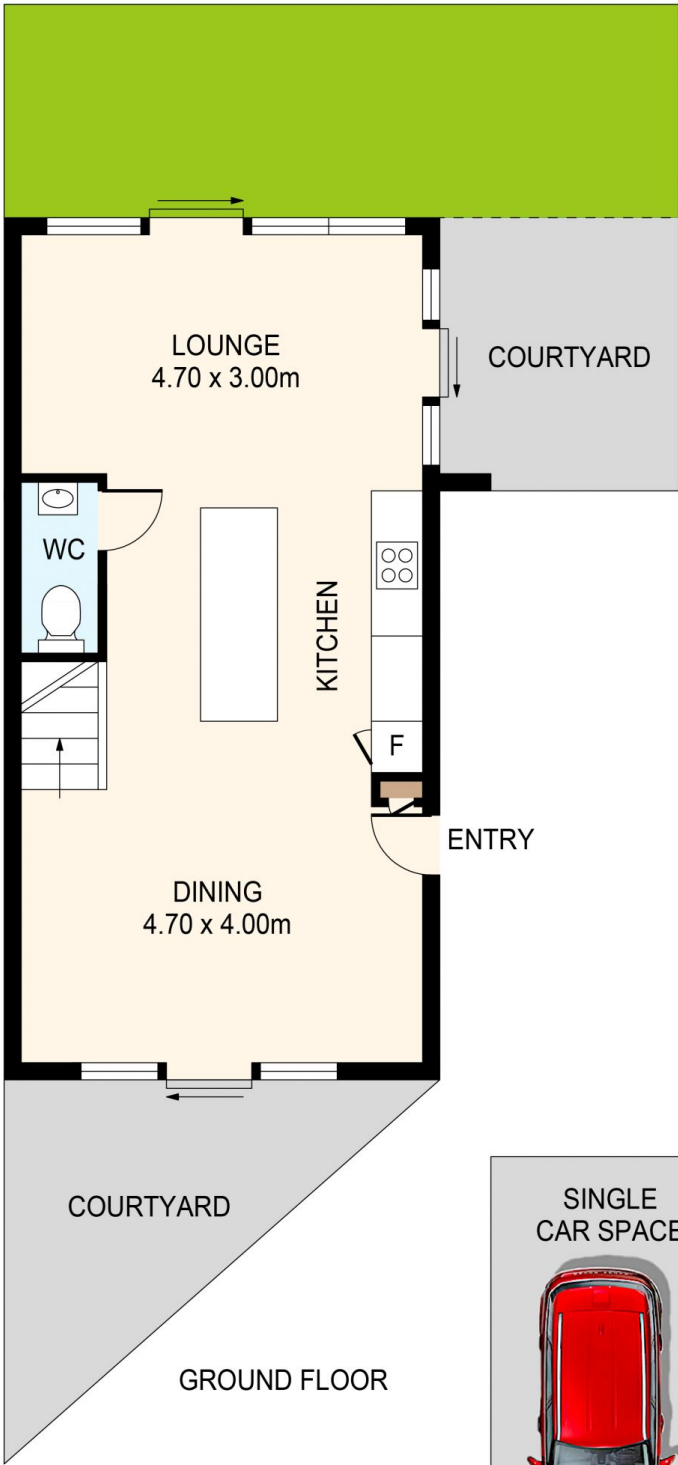
GROUND FLOOR

27, 9-15 CHERRY ST, WARRAWEE, NSW 2074

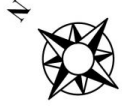
DISCLAIMER:

ALL FEATURES IN THIS PLAN ARE FOR ILLUSTRATIVE PURPOSES ONLY, ALL DIMENSIONS ARE APPROXIMATE AND NOT TO SCALE. THEY ARE SUBJECT TO ERRORS AND INACCURACIES AND NO LIABILITY WILL BE ACCEPTED. INTERESTED PARTIES SHOULD MAKE THEIR OWN INQUIRIES.





STORAGE
0.60 x 2.50m



DISCLAIMER: THIS IS FOR ILLUSTRATIVE PURPOSES ONLY. ALL DIMENSIONS ARE APPROXIMATE AND IT DOES NOT CONSTITUTE PART OF ANY LEGAL DOCUMENTS.

ADDRESS:
27/9-15 CHERRY STREET, WARRAWEE