



58/1 Lamond Drive Turramurra NSW

3  2  2 

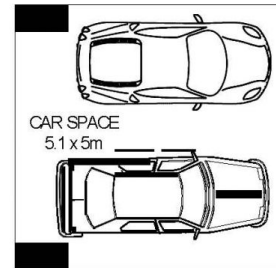
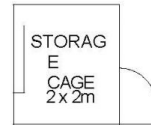
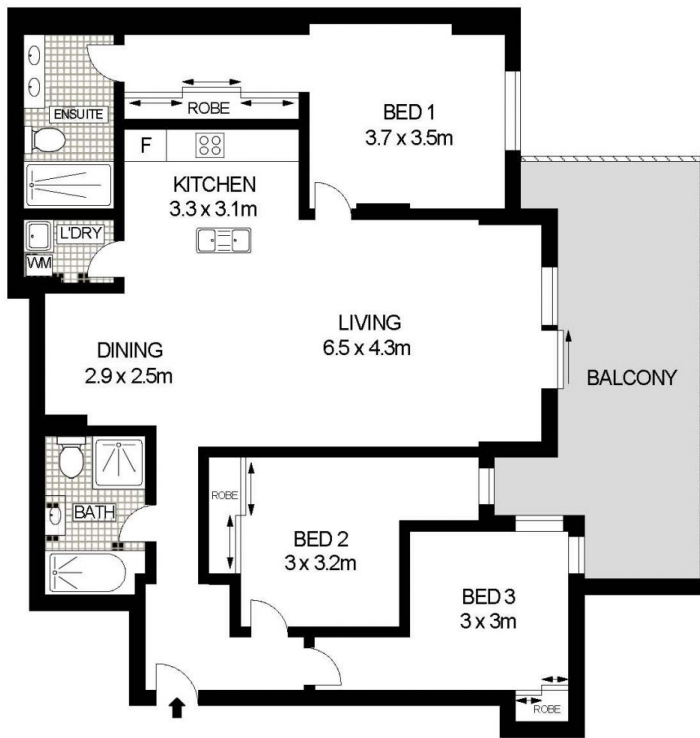
A sophisticated offering of light and style, this impressive near new 3 bedroom apartment boasts the perfect lifestyle for executives, young families and downsizers. Featuring a generous open plan layout, with sun soaked interiors that extend to an exceptional alfresco entertaining area with leafy views. The property is also conveniently located a short distance to Turramurra train station, village shops, and prestigious North Shore schools.

View : <https://www.savillsresidential.com.au/lease/nsw/north-shore-upper/turramurra/residential/apartment/5961809>

- Light filled living and dining area which flows effortlessly to a large covered balcony. Ideal for year round entertaining with leafy district views
- Modern open plan kitchen with stone bench tops, smeg stainless steel appliances and gas cooking
- Master bedroom with large ensuite, built in robes. Second and third bedroom also with built in robes
- Air conditioning units in main bedroom and living room



Julie Zhu
02 9416 9393



Dimensions are approximate. All information contained is gathered from sources we believe to be reliable. However we cannot guarantee its accuracy and interested persons should rely on their own enquiries.
www.visionphoto.com.au

58/1 LAMOND DRIVE, TURRAMURRA

APPROX. INTERNAL FLOOR AREA: 113 SQM

