



305/2 East Lane North Sydney NSW

1  1  1 

Architecturally designed by Nettleton Tribe, the apartment gives off the vibe you'd expect from an ultra modern North Sydney address. With its proximity and style this building is fast becoming a sought after place to call home.

View : <https://www.savillsresidential.com.au/sale/nsw/north-shore-lower/north-sydney/residential/apartment/5978775>

Property Features:

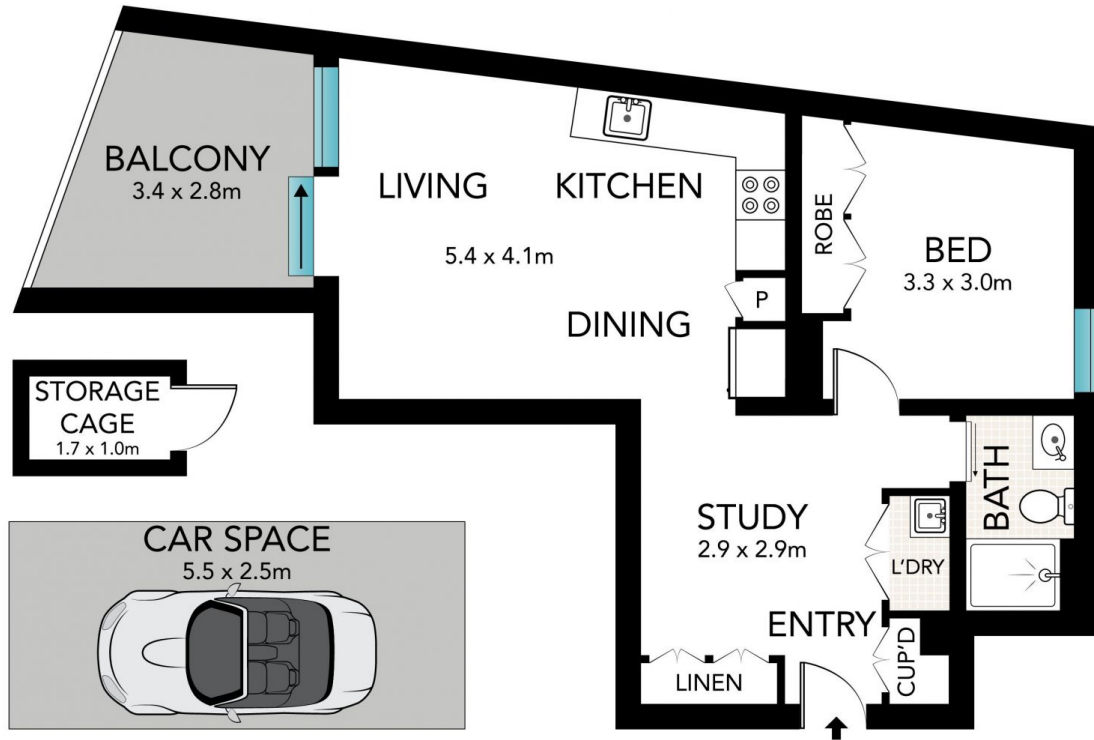
- Large entry with ample storage and room for home office
- Separate bedroom with extensive built-in wardrobes
- Ducted air conditioning, block out roller blinds in all rooms
- Internal laundry, storage cage and rubbish chute facility
- Security access via intercom & lift to each level
- Basement parking with remote control access
- White Oak flooring throughout with carpeted bedroom
- Stone benches in kitchen with gas stove and dishwasher
- Generously sized cavity for fridge with abundance of cupboard space in kitchen
- Combined kitchen and lounge which flows onto private



Chris Orr
02 9416 9393



Customer Service
02 9416 9393



Scale in metres. Indicative only. Dimensions are approximate. All information contained herein is gathered from sources we believe to be reliable. However, we cannot guarantee its accuracy and interested persons should rely on their own enquiries.

305/2 East Lane, North Sydney