

1209/718 George Street Haymarket NSW

1  1 

Inmark Tower - Prime Location

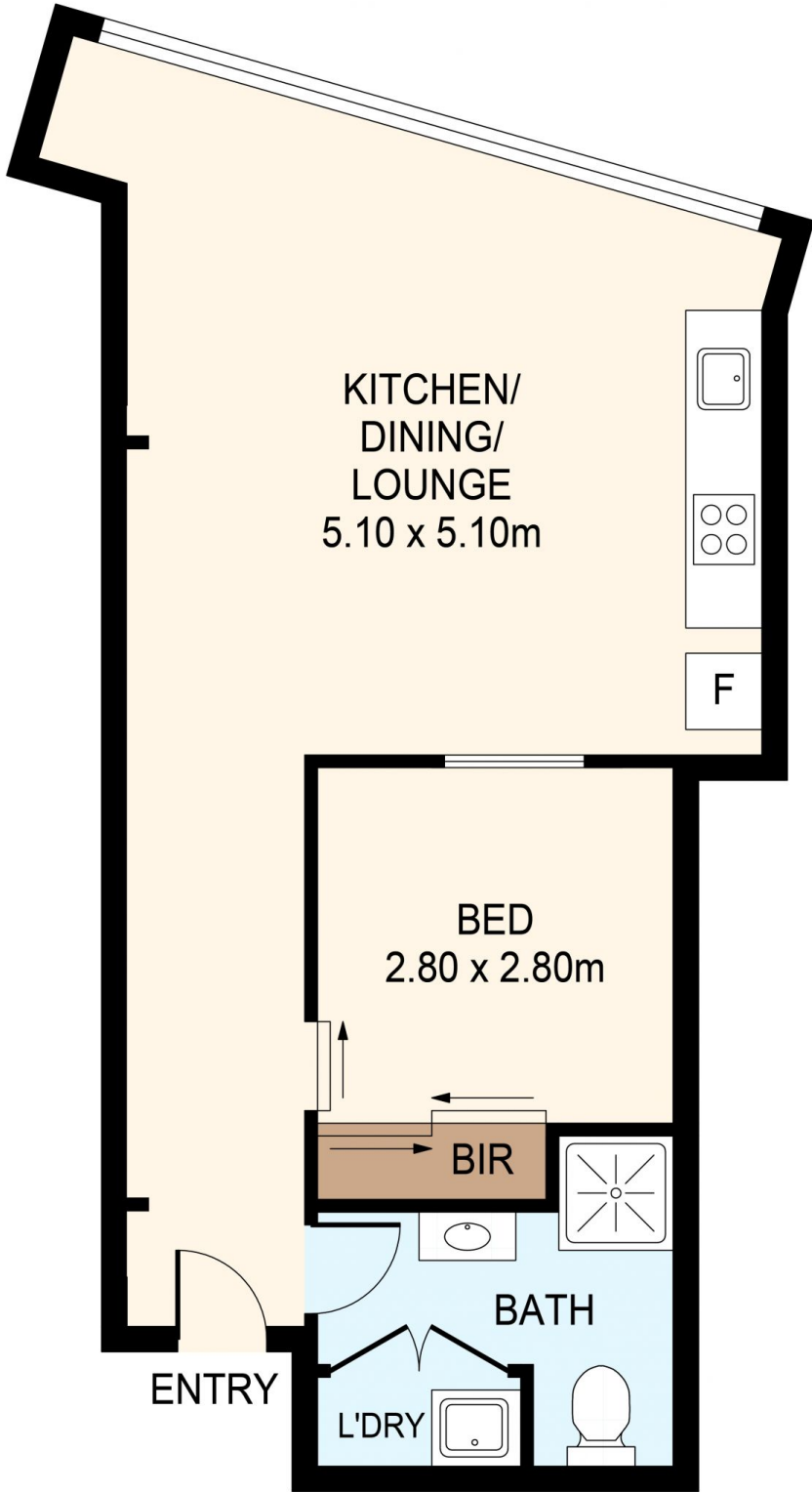
Located only 100 metres from World Square and minutes from Town Hall, Darling Harbour and China Town, this as new internal condition Inmark apartment offers the convenience and vibrancy of a city lifestyle in the heart of Sydney's CBD. Almost anything you desire are within walking distance including world class restaurants, cafes, bars, entertainment venues, Museums, Universities and the Casino.

View : <https://www.savillsresidential.com.au/sale/nsw/sydney-city/haymarket/residential/apartment/6289522>

- ? Sunny north-facing apartment as new conditions
- ? Bedroom with built-in wardrobe
- ? Contemporary kitchen with stone benchtops, gas cooking and stainless steel appliances
- ? Modern bathroom with floor to ceiling tiles
- ? Ducted air-conditioning, internal laundry



Lucy Liu
0450 413 488



STORAGE
2.30 x 0.80m



DISCLAIMER: THIS IS FOR ILLUSTRATIVE PURPOSES ONLY. ALL DIMENSIONS ARE APPROXIMATE AND IT DOES NOT CONSTITUTE PART OF ANY LEGAL DOCUMENTS.

ADDRESS:
1209/718 GEORGE STREET, HAYMARKET