



### 43 Kulgoa Road Pymble NSW

5  3  2 

This full brick family home is conveniently located in Gordon's prime East-side location. With easy access to Gordon East Primary School, transport, shops and restaurants, this home is not to be missed.

**View :** <https://www.savillsresidential.com.au/lease/nsw/north-shore-upper/pymble/residential/house/6323973>

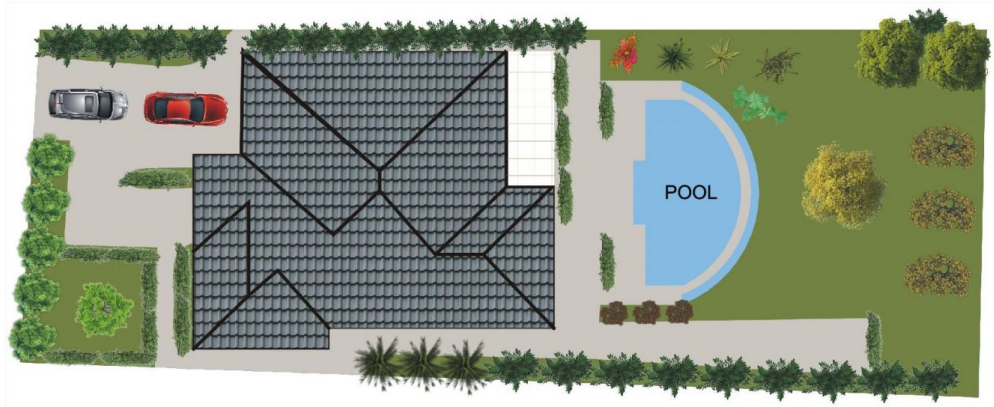
- Spacious, timber kitchen with European appliances and gas cooking
- Separate formal lounge room, family room & casual meals
- Five bedrooms with built-in robes, plus home office/6th bedroom
- Large family room flows to large entertainers deck, overlooking manicured gardens
- Sparkling infinity pool
- Energy efficient with solar panels
- Pool service included (tenant pays cost of chemicals)
- Gardening service included



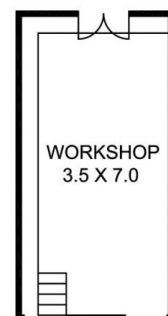
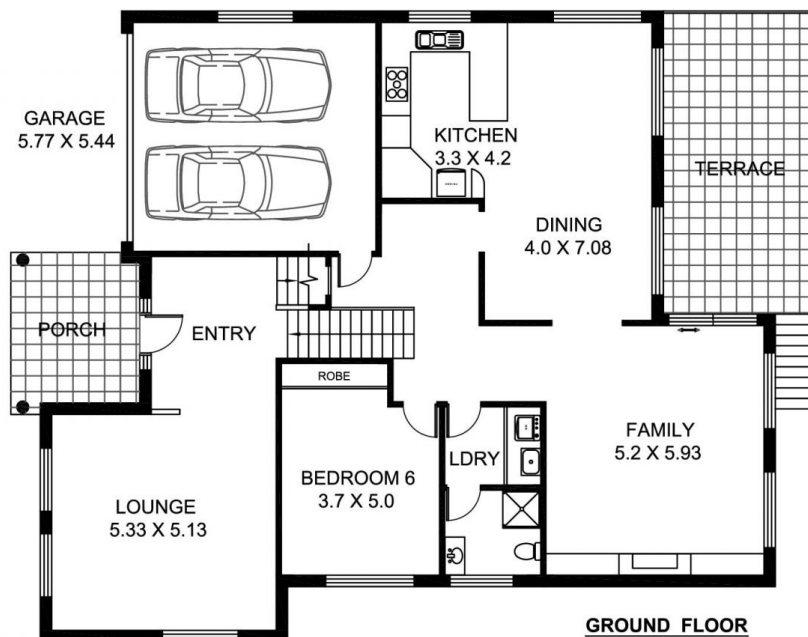
**Julie Zhu**  
0429 629 259



**Mara Iskenderian**  
02 9416 9393



**SITE PLAN**



INTERNAL AREA APPROX.	
GROUND FLOOR	165 sqm
FIRST FLOOR	150 sqm
GARAGE	33 sqm
WORKSHOP	25 sqm
TOTAL	373 sqm

43 Kulgoa Avenue, Pymble

Disclaimer: Floor plan shown is for presentation purposes and is not part of any legal document or title. All measurements and figures are approximate. Interested parties should make their own enquiries.