



10 Wycombe Street Epping NSW

4  1  1 

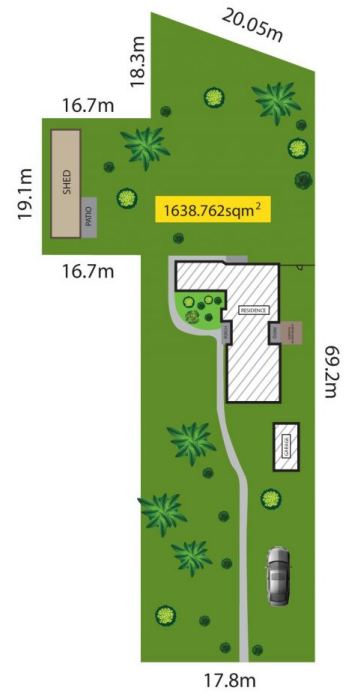
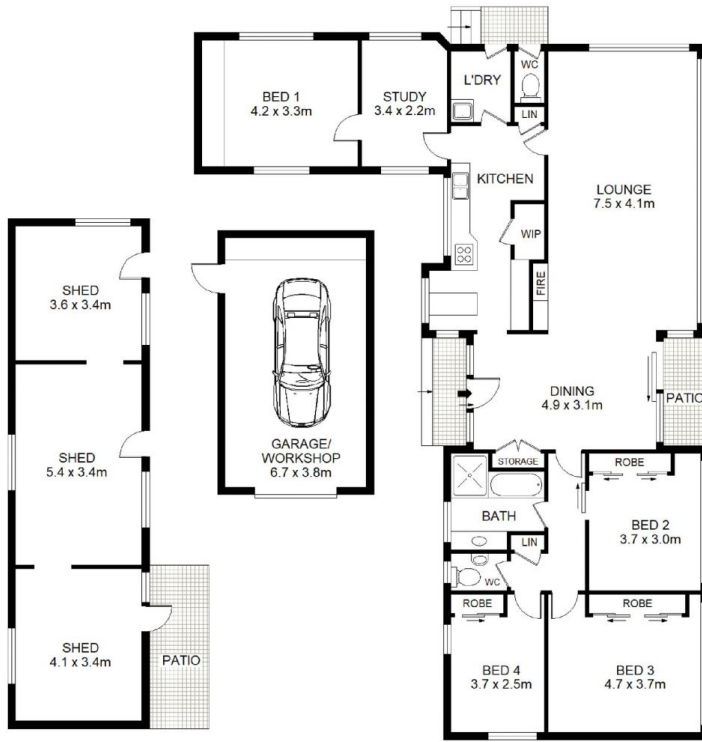
The original design drafted by George Lilliman, creates a characteristic display of the mid-century modern architectural movement. Organic shapes and materials were formed in a view to bring nature indoors via the extensive glass panelling. The existing home isn't for the faint of heart, needing significant renovation with an eye for the future, this could become an extraordinary mid-century modern revival or simply the blank slate for your dream home in a lush surrounding.

Land Size : 1638 sqm
View : <https://www.savillsresidential.com.au/sale/nsw/northern-suburbs/epping/residential/house/7336191>

- Significant renovation needed to renew the existing house or demolish
- Subdivision potential, subject to council approval
- Separate garden shed and lock-up garage
- Tenanted until December 2023
- Epping Heights Public School (205m)
- Cheltenham Girls High School (645m)



Chris Orr
02 9416 9393



SITE PLAN (NOT TO SCALE)



10 Wycombe St Epping

DISCLAIMER

DIMENSIONS ARE APPROXIMATE AND SHOULD ONLY BE USED AS A GUIDE
THEY ARE NOT TO SCALE AND NO LIABILITY WILL BE ACCEPTED

