



## 1003/2H Wentworth Park Road Glebe NSW

1  1 

Offering modern contemporary flair, this apartment and its open outlook on a high level of 'Mezzo' will impress. In a central location with security and convenience, the location on Wentworth Park is hard to beat and testament to the awards nominated.

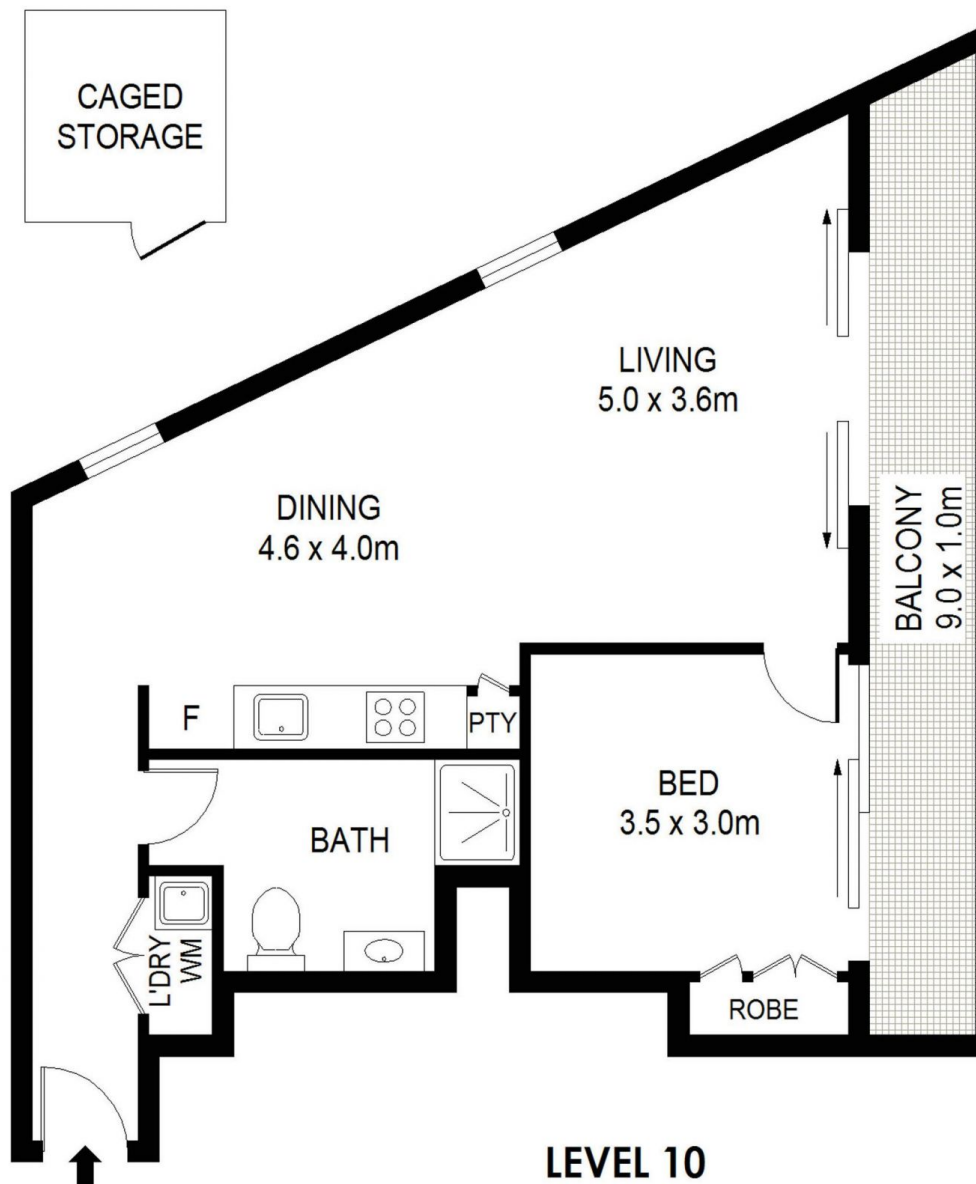
- Walking distance to Broadway, UTS, Sydney Uni, Fish Markets, Central Station & Darling Harbour
- Seamless stone benches in kitchen, Miele appliances, integrated dishwasher & gas cooking
- Mosaic tile finishes in the bathroom with stunning VJ timber panelling
- Separate laundry and bathroom off hallway, away from living space
- Queen sized bedroom with built in wardrobes and access to balcony
- Private outlook over beautiful common gardens with

**Price** : Expressions of Interest

**View** : <https://www.savillsresidential.com.au/sale/nsw/inner-west/glebe/residential/apartment/7972725>



**Chris Orr**  
**02 9416 9393**



A1003/2H Wentworth Park Rd Glebe



DISCLAIMER

DIMENSIONS ARE APPROXIMATE AND SHOULD ONLY BE USED AS A GUIDE  
THEY ARE NOT TO SCALE AND NO LIABILITY WILL BE ACCEPTED

