



20 Russell Avenue Lindfield NSW

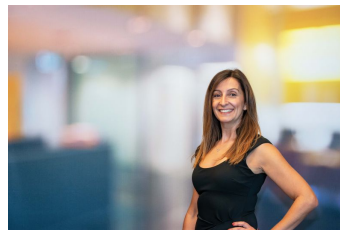
3  2  2 

Single level, 3 bedroom brick residence. Set in a tightly-held peaceful enclave of blue-ribbon Lindfield, this is one of those rare opportunities close to the village shops, cafes & rail all within easy walking distance.

- * Entrance hall with parquet flooring opens on both sides to either formal living or formal dining rooms
- * Formal living room flows to private sandstone terrace; original eat-in kitchen overlooking rear garden
- * North-facing family room spills to sandstone entertaining terrace, level lawn & established gardens
- * Spacious Master bedroom with WIR & ensuite; 2 additional generous bedrooms, both with built-ins
- * Original family bathroom; large laundry with convenient external access; ample storage space
- * Rear lane access (Tryon Lane) to auto single lock up garage;

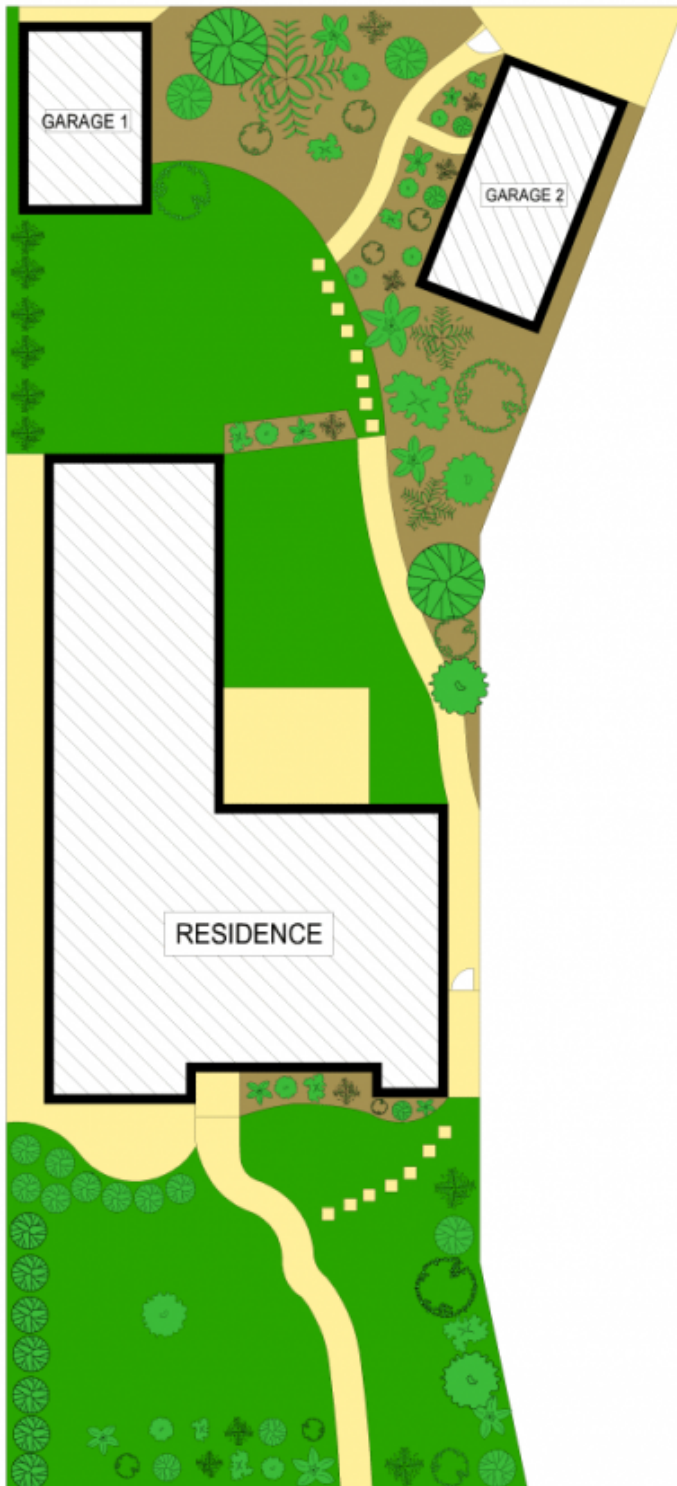
Price : \$1,100 per week

View : <https://www.savillsresidential.com.au/lease/nsw/north-shore-upper/lindfield/residential/house/7975451>

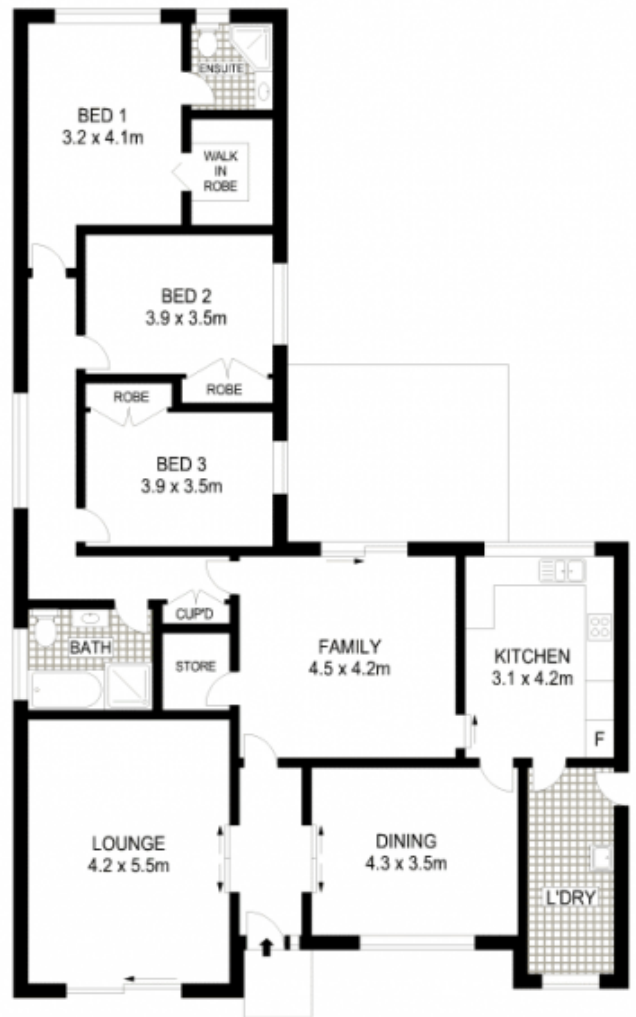
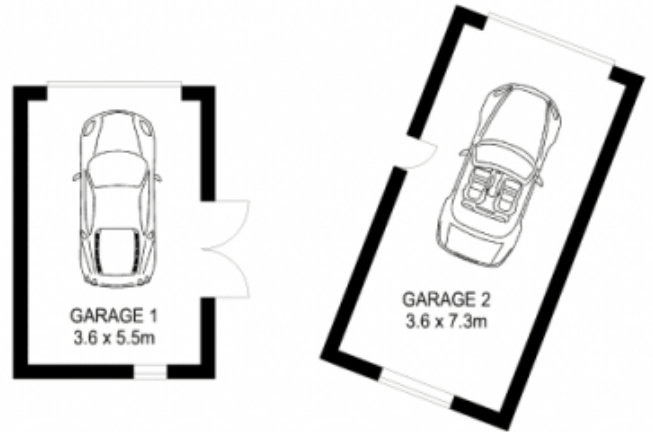


Samantha Manolias
02 9416 9393

TRYON LANE



SITE PLAN



Dimensions are approximate. All information contained herein is gathered from sources we believe to be reliable. However we cannot guarantee its accuracy and interested persons should rely on their own enquiries.

20 Russell Avenue, LINDFIELD

APPROX. INTERNAL FLOOR AREA: 158SQM